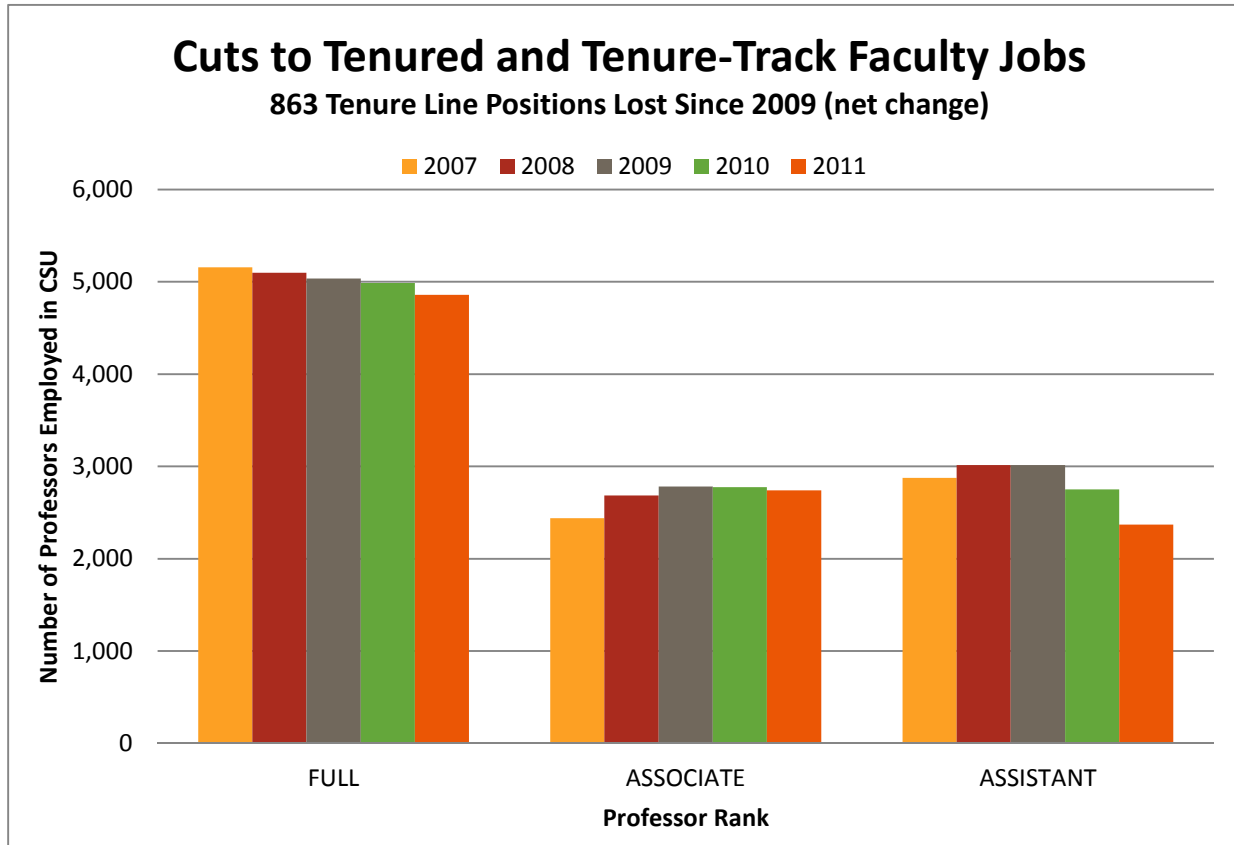


FACULTY COUNTS: MAY 2007 to MAY 2011

Numbers of Faculty Employed in the CSU System and by Campus

August 2011



	Headcount by Rank			
	<u>FULL</u>	<u>ASSOCIATE</u>	<u>ASSISTANT</u>	<u>ALL RANKS</u>
2007	5,157	2,440	2,878	10,475
2008	5,099	2,687	3,017	10,803
2009	5,036	2,783	3,015	10,834
2010	4,986	2,775	2,751	10,512
2011	4,861	2,740	2,370	9,971
5-yr change	-296	300	-508	-504

NOTES:

source: CSU PIMS database, May snapshot
Please see important data notes on each of the following pages.

* Campus-specific trends do not always correspond to the systemwide patterns. Data for each campus is provided and should be reviewed carefully.

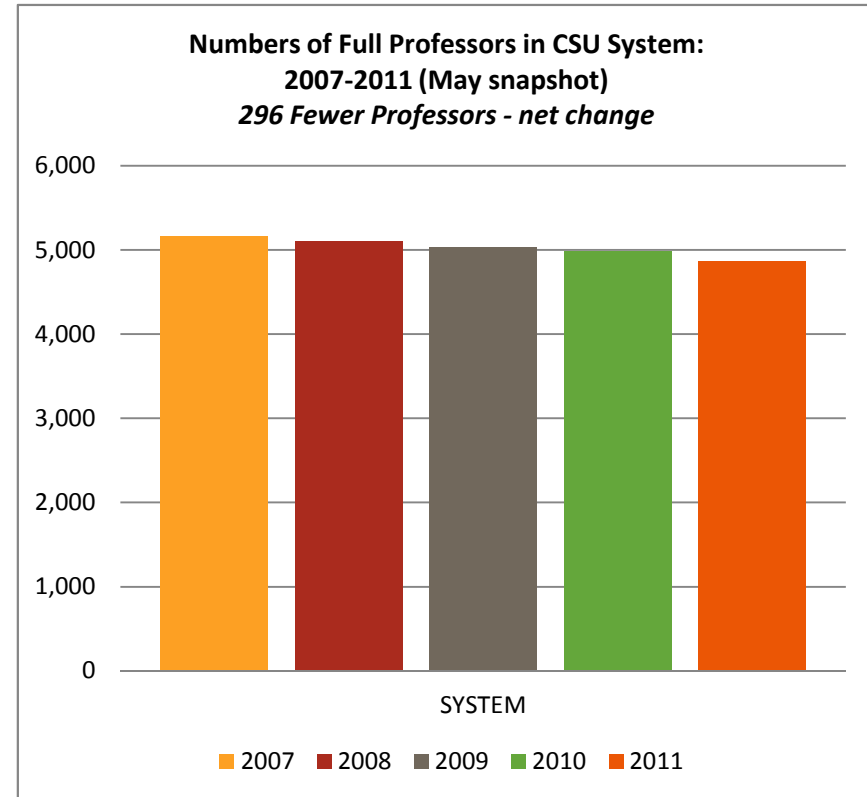
Please contact Aimee Shreck, CFA researcher, with any questions.

Email: ashreck@calfac.org

Phone: 916-441-4848

FULL PROFESSORS [headcount]

	2007	2008	2009	2010	2011	vs 2007	
Bakersfield	102	98	95	95	91	-11%	-11 ■■■■■■
Channel Islands	21	21	21	22	25	19%	4 ■■■■■■
Chico	280	271	269	271	264	-6%	-16 ■■■■■■
Dominguez	131	123	117	105	107	-18%	-24 ■■■■■■
East Bay	150	137	131	132	126	-16%	-24 ■■■■■■
Fresno	255	251	255	249	240	-6%	-15 ■■■■■■
Fullerton	297	289	294	286	279	-6%	-18 ■■■■■■
Humboldt	126	126	132	133	131	4%	5 ■■■■■■
Long Beach	401	402	399	395	396	-1%	-5 ■■■■■■
Los Angeles	286	292	286	290	295	3%	9 ■■■■■■
Maritime	11	11	11	13	15	36%	4 ■■■■■■
Monterey	44	41	42	43	44	0%	0 ■■■■■■
Northridge	341	328	332	329	337	-1%	-4 ■■■■■■
Pomona	364	353	325	325	316	-13%	-48 ■■■■■■
Sacramento	346	341	321	320	299	-14%	-47 ■■■■■■
San Bernardino	209	217	220	224	221	6%	12 ■■■■■■
San Diego	386	378	377	375	364	-6%	-22 ■■■■■■
San Francisco	330	345	340	339	310	-6%	-20 ■■■■■■
San Jose	378	376	377	356	340	-10%	-38 ■■■■■■
San Luis Obispo	375	360	353	347	320	-15%	-55 ■■■■■■
San Marcos	78	87	86	81	87	12%	9 ■■■■■■
Sonoma	122	127	128	133	130	7%	8 ■■■■■■
Stanislaus	124	125	125	123	124	0%	0 ■■■■■■
SYSTEM	5,157	5,099	5,036	4,986	4,861	-6%	-296 ■■■■■■

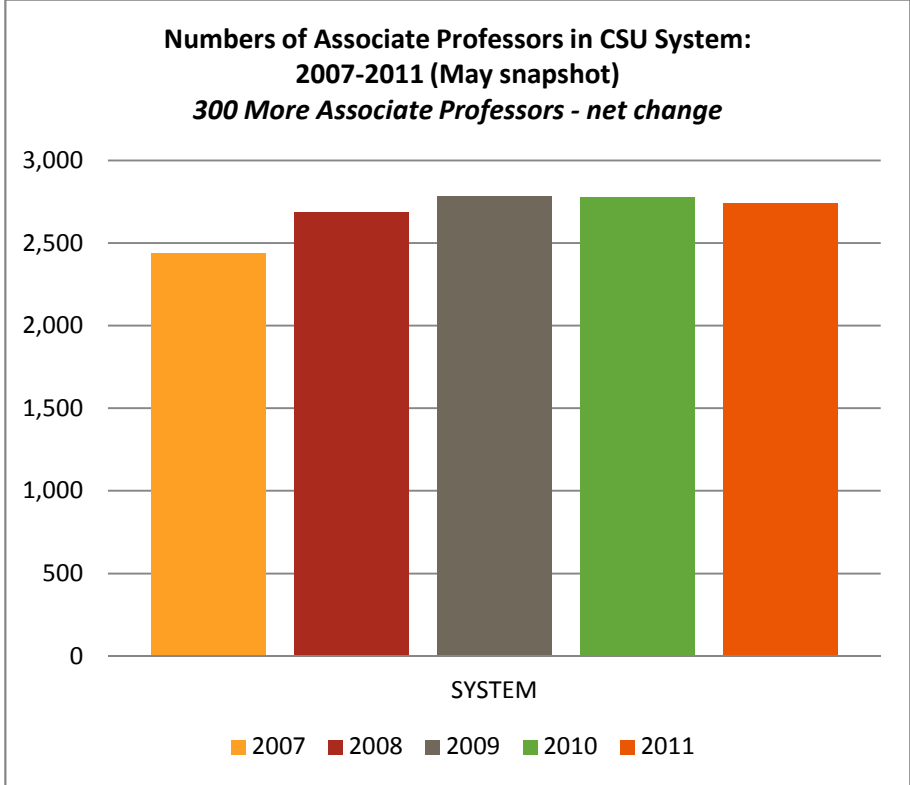


NOTES ABOUT DATA

1. source: CSU PIMS database, May snapshots
2. Data correspond to the numbers of faculty employed at time of snapshot
3. Faculty members who have multiple appointments are counted only once in this analysis.
4. An increase or decrease from year to year does not represent numbers of new hires, layoffs, or retirements; the increase/decrease represents a net change
for instance: systemwide, there were 125 fewer Full Professor employed in May 2011 compared with May 2010 (= 4,861-4,986)
-- this does not mean 125 Full Profs were laid off or retired; instead, after retirements, other separations, and promotions are factored, there were fewer Fulls this past spring than in the previous year.

ASSOCIATE PROFESSORS [headcount]

	2007	2008	2009	2010	2011	vs 2007	
Bakersfield	54	60	62	60	57	6%	3 ■■■■■
Channel Islands	15	27	36	38	39	160%	24 ■■■■■
Chico	127	131	121	100	100	-21%	-27 ■■■■■
Dominguez	50	58	67	68	70	40%	20 ■■■■■
East Bay	79	93	99	87	93	18%	14 ■■■■■
Fresno	120	137	134	138	138	15%	18 ■■■■■
Fullerton	170	195	198	197	196	15%	26 ■■■■■
Humboldt	87	84	69	65	62	-29%	-25 ■■■■■
Long Beach	187	203	200	208	197	5%	10 ■■■■■
Los Angeles	109	112	123	131	131	20%	22 ■■■■■
Maritime	14	10	12	11	9	-36%	-5 ■■■■■
Monterey	28	31	29	27	31	11%	3 ■■■■■
Northridge	181	212	229	232	216	19%	35 ■■■■■
Pomona	111	112	112	111	99	-11%	-12 ■■■■■
Sacramento	142	180	207	225	223	57%	81 ■■■■■
San Bernardino	98	101	97	80	78	-20%	-20 ■■■■■
San Diego	238	243	246	243	244	3%	6 ■■■■■
San Francisco	145	170	192	200	217	50%	72 ■■■■■
San Jose	157	160	166	158	165	5%	8 ■■■■■
San Luis Obispo	145	166	163	170	170	17%	25 ■■■■■
San Marcos	63	69	78	87	81	29%	18 ■■■■■
Sonoma	67	72	72	70	62	-7%	-5 ■■■■■
Stanislaus	53	61	71	69	62	17%	9 ■■■■■
SYSTEM	2,440	2,687	2,783	2,775	2,740	12%	300 ■■■■■

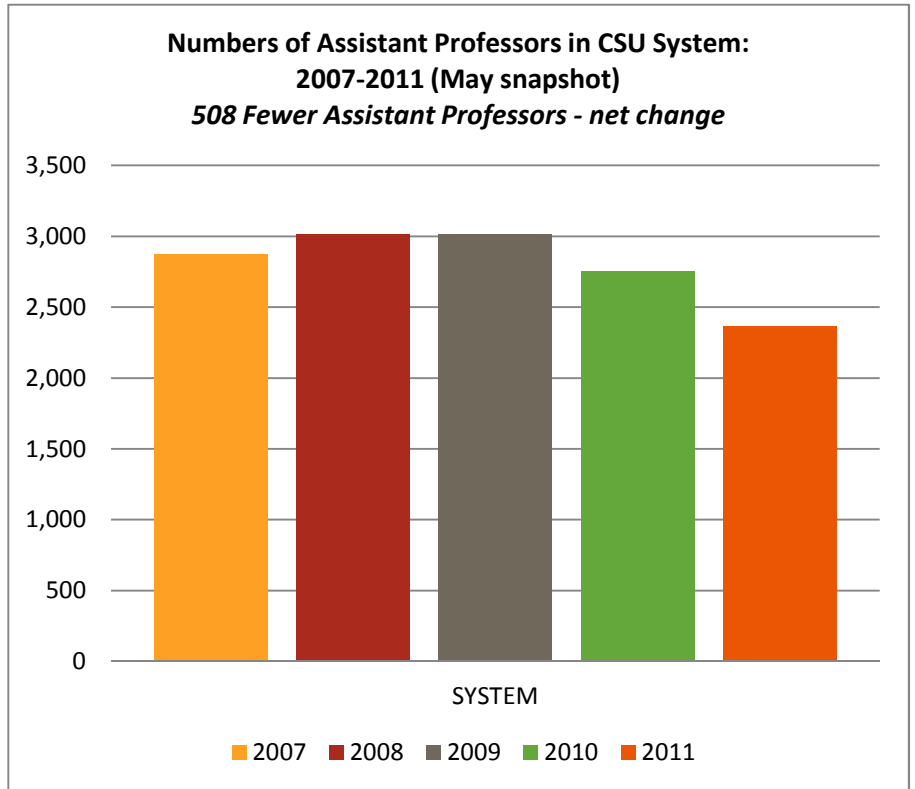


NOTES ABOUT DATA

1. source: CSU PIMS database, May snapshots
2. Data correspond to the numbers of faculty employed at time of snapshot
3. Faculty members who have multiple appointments are counted only once in this analysis.
4. An increase or decrease from year to year does not represent numbers of new hires, layoffs, or retirements; the increase/decrease represents a net change
for instance: systemswide, there were 35 fewer Associate Professors employed in May 2011 compared with May 2010 (= 2,740-2,775)
-- this does not mean 35 Associate Profs were laid off or retired; instead, after any separations, promotions, and new hires are factored, there were fewer Associates this past spring than in the previous year.

ASSISTANT PROFESSORS [headcount]

	2007	2008	2009	2010	2011	vs 2007	
Bakersfield	76	63	50	40	34	-55%	-42 ■■■■■■
Channel Islands	31	30	26	21	16	-48%	-15 ■■■■■■
Chico	98	120	138	128	118	20%	20 ■■■■■■
Dominguez	85	96	75	75	61	-28%	-24 ■■■■■■
East Bay	105	115	131	114	93	-11%	-12 ■■■■■■
Fresno	159	178	191	181	166	4%	7 ■■■■■■
Fullerton	217	251	260	257	240	11%	23 ■■■■■■
Humboldt	67	58	65	51	40	-40%	-27 ■■■■■■
Long Beach	217	241	235	232	206	-5%	-11 ■■■■■■
Los Angeles	129	127	119	119	98	-24%	-31 ■■■■■■
Maritime	10	15	11	14	15	50%	5 ■■■■■■
Monterey	33	36	35	40	35	6%	2 ■■■■■■
Northridge	214	213	201	164	135	-37%	-79 ■■■■■■
Pomona	109	131	125	112	98	-10%	-11 ■■■■■■
Sacramento	252	211	198	172	133	-47%	-119 ■■■■■■
San Bernardino	83	87	96	82	76	-8%	-7 ■■■■■■
San Diego	194	188	185	158	129	-34%	-65 ■■■■■■
San Francisco	258	289	277	256	209	-19%	-49 ■■■■■■
San Jose	168	171	178	178	148	-12%	-20 ■■■■■■
San Luis Obispo	169	185	218	189	169	0%	0 ■■■■■■
San Marcos	62	66	60	46	42	-32%	-20 ■■■■■■
Sonoma	71	68	65	60	56	-21%	-15 ■■■■■■
Stanislaus	71	78	76	62	53	-25%	-18 ■■■■■■
SYSTEM	2,878	3,017	3,015	2,751	2,370	-18%	-508 ■■■■■■

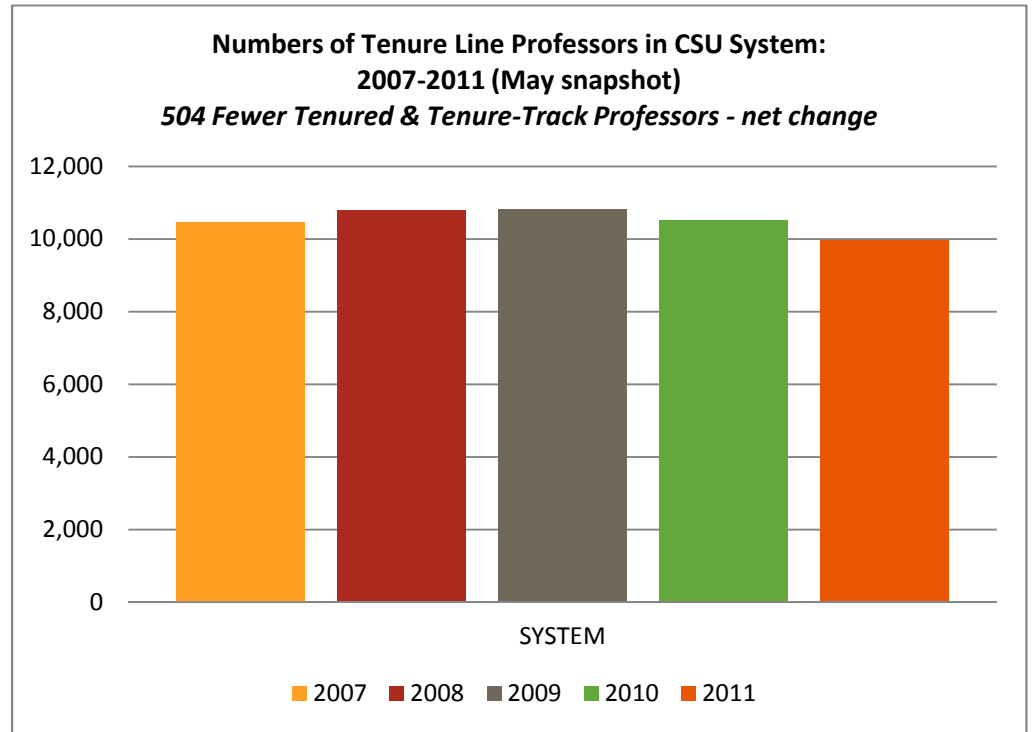


NOTES ABOUT DATA

1. source: CSU PIMS database, May snapshots
2. Data correspond to the numbers of faculty employed at time of snapshot
3. Faculty members who have multiple appointments are counted only once in this analysis.
4. An increase or decrease from year to year does not represent numbers of new hires, layoffs, or retirements; the increase/decrease represents a net change
*for instance: systemwide, there were 381 fewer Assistant Professors employed in May 2011 compared with May 2010 (= 2,370-2,751)
 -- this does not mean 381 Assistant Profs were laid off or left the CSU; instead, after any separations, promotions, and new hiring are factored, there were fewer Assistants this past spring than in the previous year.*

ALL TENURED/TENURE TRACK PROFESSORS [headcount]

	2007	2008	2009	2010	2011	vs 2007	
Bakersfield	232	221	207	195	182	-22%	-50 ■■■■■■
Channel Islands	67	78	83	81	80	19%	13 ■■■■■■
Chico	505	522	528	499	482	-5%	-23 ■■■■■■
Dominguez	266	277	259	248	238	-11%	-28 ■■■■■■
East Bay	334	345	361	333	312	-7%	-22 ■■■■■■
Fresno	534	566	580	568	544	2%	10 ■■■■■■
Fullerton	684	735	752	740	715	5%	31 ■■■■■■
Humboldt	280	268	266	249	233	-17%	-47 ■■■■■■
Long Beach	805	846	834	835	799	-1%	-6 ■■■■■■
Los Angeles	524	531	528	540	524	0%	0 ■■■■■■
Maritime	35	36	34	38	39	11%	4 ■■■■■■
Monterey	105	108	106	110	110	5%	5 ■■■■■■
Northridge	736	753	762	725	688	-7%	-48 ■■■■■■
Pomona	584	596	562	548	513	-12%	-71 ■■■■■■
Sacramento	740	732	726	717	655	-11%	-85 ■■■■■■
San Bernardino	390	405	413	386	375	-4%	-15 ■■■■■■
San Diego	818	809	808	776	737	-10%	-81 ■■■■■■
San Francisco	733	804	809	795	736	0%	3 ■■■■■■
San Jose	703	707	721	692	653	-7%	-50 ■■■■■■
San Luis Obispo	689	711	734	706	659	-4%	-30 ■■■■■■
San Marcos	203	222	224	214	210	3%	7 ■■■■■■
Sonoma	260	267	265	263	248	-5%	-12 ■■■■■■
Stanislaus	248	264	272	254	239	-4%	-9 ■■■■■■
SYSTEM	10,475	10,803	10,834	10,512	9,971	-5%	-504 ■■■■■■



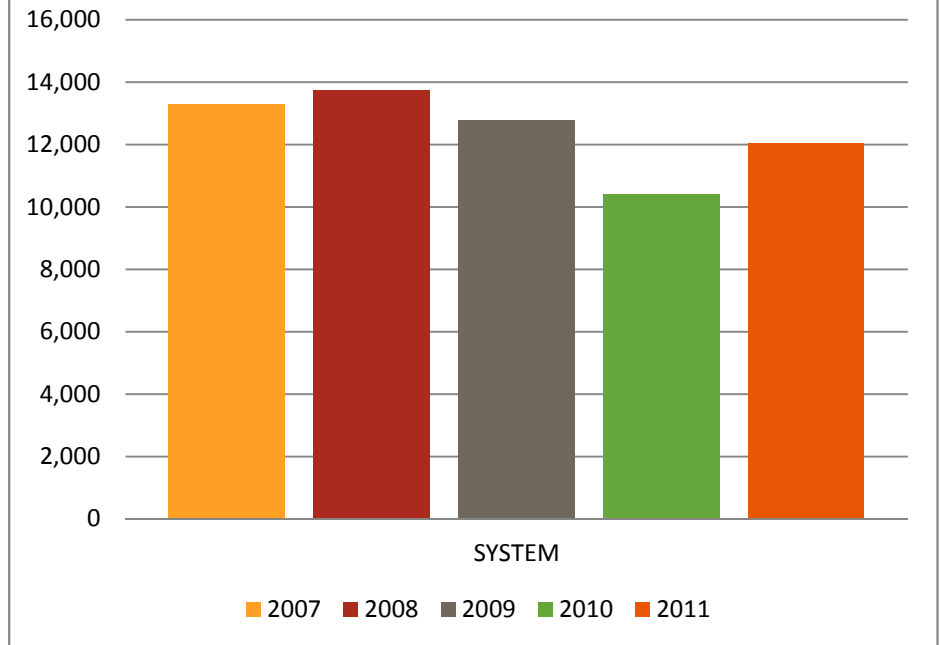
NOTES ABOUT DATA

1. source: CSU PIMS database, May snapshots
2. Data correspond to the numbers of faculty employed at time of snapshot
3. Faculty members who have multiple appointments are counted only once in this analysis.
4. An increase or decrease from year to year does not represent numbers of new hires, layoffs, or retirements; the increase/decrease represents a net change
*for instance: systemwide, there were 541 fewer Tenured & Tenure-Track Professors employed in May 2011 compared with May 2010 (= 9,971-10,512)
 -- this does not mean 541 Profs were laid off or left the CSU; instead, after any separations, promotions, and new hiring are factored, there were fewer Tenured & Tenure-Track faculty this past spring than in the previous year.*

LECTURERS (FULL & PART-TIME) [headcount]

	2007	2008	2009	2010	2011	vs 2007	
Bakersfield	223	208	207	170	194	-13%	-29 ■■■■■
Channel Islands	180	191	190	171	185	3%	5 ■■■■■
Chico	496	526	463	379	421	-15%	-75 ■■■■■
Dominguez	392	430	412	323	432	10%	40 ■■■■■
East Bay	396	436	418	269	353	-11%	-43 ■■■■■
Fresno	761	748	718	541	619	-19%	-142 ■■■■■
Fullerton	1,256	1,278	1,034	834	1,086	-14%	-170 ■■■■■
Humboldt	250	251	278	265	271	8%	21 ■■■■■
Long Beach	1,200	1,275	1,249	994	1,116	-7%	-84 ■■■■■
Los Angeles	633	667	635	498	539	-15%	-94 ■■■■■
Maritime	40	47	41	41	46	15%	6 ■■■■■
Monterey	176	178	165	171	208	18%	32 ■■■■■
Northridge	1,076	1,097	1,083	992	1,061	-1%	-15 ■■■■■
Pomona	563	508	540	437	533	-5%	-30 ■■■■■
Sacramento	771	774	709	525	618	-20%	-153 ■■■■■
San Bernardino	526	520	467	376	426	-19%	-100 ■■■■■
San Diego	926	1,038	932	736	799	-14%	-127 ■■■■■
San Francisco	969	940	763	609	754	-22%	-215 ■■■■■
San Jose	1,103	1,191	1,178	1,003	1,046	-5%	-57 ■■■■■
San Luis Obispo	517	573	502	432	479	-7%	-38 ■■■■■
San Marcos	275	280	269	269	346	26%	71 ■■■■■
Sonoma	272	314	274	210	269	-1%	-3 ■■■■■
Stanislaus	273	275	237	168	230	-16%	-43 ■■■■■
SYSTEM	13,274	13,745	12,764	10,413	12,031	-9%	-1,243 ■■■■■

**Numbers of Lecturers in CSU System:
2007-2011 (May snapshot)**
1,242 Fewer Lecturers Employed - net change

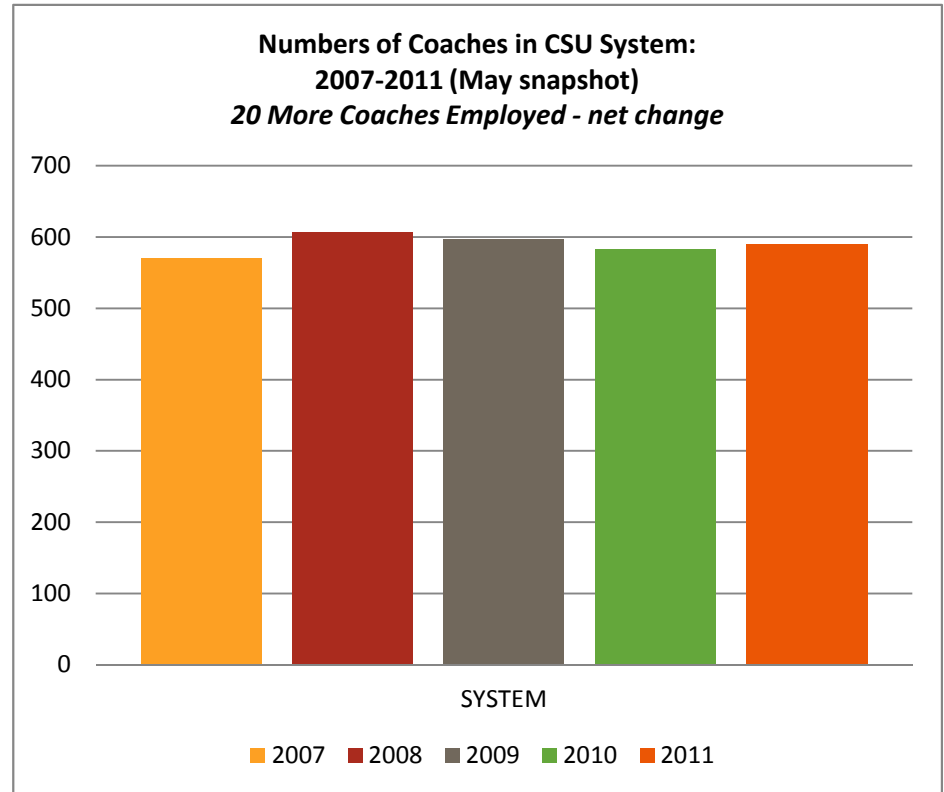


NOTES ABOUT DATA

1. source: CSU PIMS database, May snapshots
2. Data correspond to the numbers of faculty employed at time of snapshot
3. Faculty members who have multiple appointments are counted only once in this analysis.
4. An increase or decrease from year to year does not represent numbers of new hires, layoffs, or retirements; the increase/decrease represents a net change
for instance: systemwide, there were actually 1,618 more lecturers employed in May 2011 compared with May 2010 (= 12,031-10,413)
All lecturer appointments are temporary appointments
5. Most lecturers have less than full-time appointments; data refer to numbers of lecturers employed (headcount), not number of positions (FTE)

COACHES [headcount]

	2007	2008	2009	2010	2011	vs 2007	
Bakersfield	31	34	33	34	35	13%	4 ■■■■■
Channel Islands	0	0	0	0	0	-	-
Chico	27	33	28	26	27	0%	0 ■■■■■
Dominguez	20	20	19	17	17	-15%	-3 ■■■■■
East Bay	24	25	32	29	27	13%	3 ■■■■■
Fresno	18	20	29	31	28	56%	10 ■■■■■
Fullerton	29	27	31	30	29	0%	0 ■■■■■
Humboldt	21	26	21	16	21	0%	0 ■■■■■
Long Beach	26	27	24	28	29	12%	3 ■■■■■
Los Angeles	15	16	16	18	21	40%	6 ■■■■■
Maritime	7	7	7	7	8	14%	1 ■■■■■
Monterey	23	23	19	19	18	-22%	-5 ■■■■■
Northridge	34	38	38	33	37	9%	3 ■■■■■
Pomona	24	22	21	20	18	-25%	-6 ■■■■■
Sacramento	47	45	44	44	45	-4%	-2 ■■■■■
San Bernardino	22	27	22	26	27	23%	5 ■■■■■
San Diego	54	55	56	49	39	-28%	-15 ■■■■■
San Francisco	18	19	21	20	20	11%	2 ■■■■■
San Jose	36	40	40	38	42	17%	6 ■■■■■
San Luis Obispo	43	46	41	41	42	-2%	-1 ■■■■■
San Marcos	15	15	10	11	13	-13%	-2 ■■■■■
Sonoma	20	24	29	25	27	35%	7 ■■■■■
Stanislaus	16	17	16	20	20	25%	4 ■■■■■
SYSTEM	570	606	597	582	590	4%	20 ■■■■■



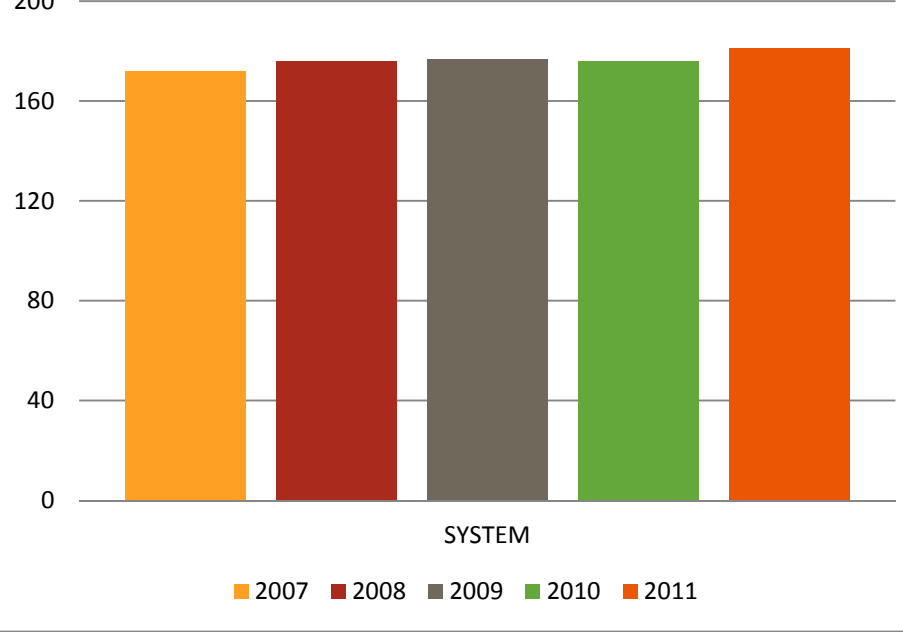
NOTES ABOUT DATA

1. source: CSU PIMS database, May snapshots
2. Data correspond to the numbers of faculty employed at time of snapshot
3. Faculty members who have multiple appointments are counted only once in this analysis.
4. An increase or decrease from year to year does not represent numbers of new hires, layoffs, or retirements; the increase/decrease represents a net change
for instance: systemwide, there were 8 more coaches employed in May 2011 compared with May 2010 (= 591-582)
Coach appointments are temporary appointments
5. Many coaches have less than full-time appointments; data refer to numbers of lecturers employed (headcount), not number of positions (FTE)

COUNSELORS [headcount]

	2007	2008	2009	2010	2011	vs 2007	
Bakersfield	4	4	4	4	4	0%	0 ■■■■■
Channel Islands	1	1	2	2	2	100%	1 ■■■■■
Chico	8	9	9	6	6	-25%	-2 ■■■■■
Dominguez	8	9	8	7	7	-13%	-1 ■■■■■
East Bay	6	5	5	6	5	-17%	-1 ■■■■■
Fresno	5	6	5	6	6	20%	1 ■■■■■
Fullerton	6	9	13	13	14	133%	8 ■■■■■
Humboldt	4	5	4	4	5	25%	1 ■■■■■
Long Beach	12	11	12	11	12	0%	0 ■■■■■
Los Angeles	3	3	3	5	2	-33%	-1 ■■■■■
Maritime	0	0	0	0	0	-	-
Monterey	2	3	3	3	3	50%	1 ■■■■■
Northridge	10	14	12	12	13	30%	3 ■■■■■
Pomona	6	6	6	7	9	50%	3 ■■■■■
Sacramento	19	18	16	14	16	-16%	-3 ■■■■■
San Bernardino	6	5	6	7	7	17%	1 ■■■■■
San Diego	27	28	23	23	25	-7%	-2 ■■■■■
San Francisco	14	11	11	11	11	-21%	-3 ■■■■■
San Jose	15	13	13	15	14	-7%	-1 ■■■■■
San Luis Obispo	4	4	5	6	6	50%	2 ■■■■■
San Marcos	4	4	5	4	4	0%	0 ■■■■■
Sonoma	3	3	6	6	6	100%	3 ■■■■■
Stanislaus	5	5	6	4	4	-20%	-1 ■■■■■
SYSTEM	172	176	177	176	181	5%	9 ■■■■■

**Numbers of Counselors [SSP/AR] in CSU System:
2007-2011 (May snapshot)
8 More Counselors Employed - net change**



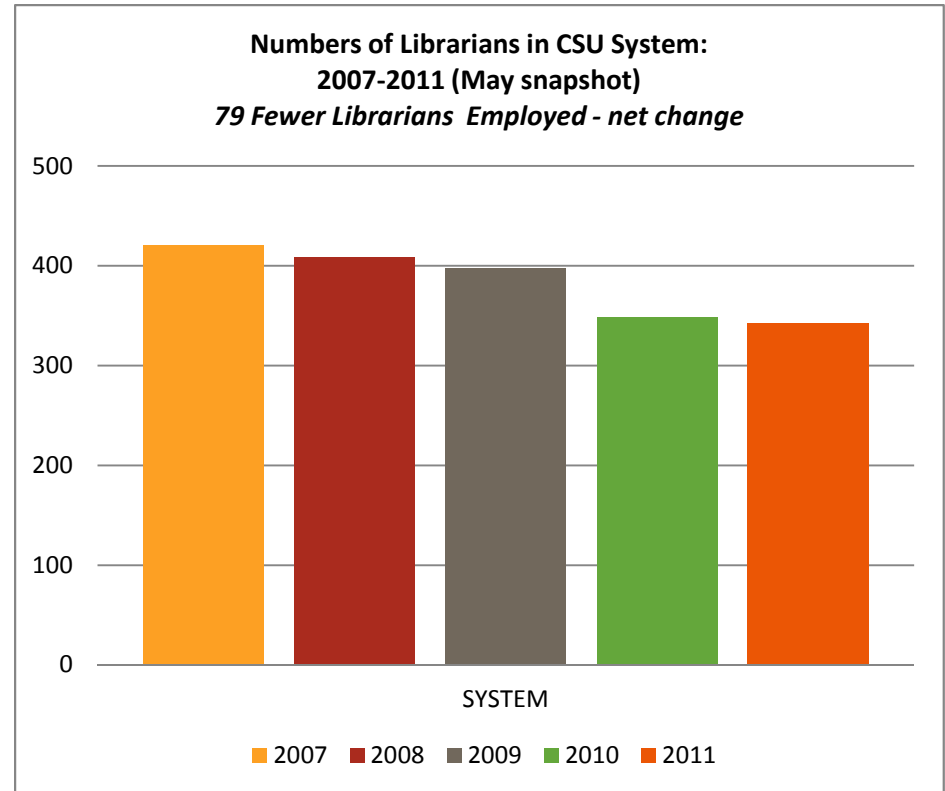
NOTES ABOUT DATA

1. source: CSU PIMS database, May snapshots
2. Data correspond to the numbers of faculty employed at time of snapshot
3. Faculty members who have multiple appointments are counted only once in this analysis.
4. An increase or decrease from year to year does not represent numbers of new hires, layoffs, or retirements; the increase/decrease represents a net change
for instance: systemwide, there were 5 more counselors (SSP/AR) employed in May 2011 compared with May 2010 (= 181-176)
Counselors may be employed in either tenured/tenure-track or temporary appointments
5. Counselors in this case refer to faculty in the SSP/AR classification; data should be interpreted cautiously, however because of known issues where some faculty are employed as SSP/ARs but are not performing counseling work. Please contact Aimee Shreck at CFA for further information if needed.

LIBRARIANS [headcount]

	2007	2008	2009	2010	2011	vs 2007	
Bakersfield	11	11	11	11	11	0%	0 ■■■■■
Channel Islands	6	9	8	8	8	33%	2 ■■■■■
Chico	20	20	17	14	12	-40%	-8 ■■■■■
Dominguez	11	12	10	9	9	-18%	-2 ■■■■■
East Bay	13	17	14	15	16	23%	3 ■■■■■
Fresno	20	17	20	18	19	-5%	-1 ■■■■■
Fullerton	45	43	42	23	25	-44%	-20 ■■■■■
Humboldt	12	10	9	9	7	-42%	-5 ■■■■■
Long Beach	21	16	16	17	17	-19%	-4 ■■■■■
Los Angeles	26	22	24	14	13	-50%	-13 ■■■■■
Maritime	1	2	2	2	2	100%	1 ■■■■■
Monterey	8	9	9	7	9	13%	1 ■■■■■
Northridge	33	31	29	29	26	-21%	-7 ■■■■■
Pomona	17	17	13	12	12	-29%	-5 ■■■■■
Sacramento	31	30	31	24	24	-23%	-7 ■■■■■
San Bernardino	15	15	13	12	12	-20%	-3 ■■■■■
San Diego	29	29	28	28	30	3%	1 ■■■■■
San Francisco	26	26	23	23	23	-12%	-3 ■■■■■
San Jose	31	31	33	32	30	-3%	-1 ■■■■■
San Luis Obispo	9	10	11	10	9	0%	0 ■■■■■
San Marcos	13	12	15	13	13	0%	0 ■■■■■
Sonoma	10	10	10	10	9	-10%	-1 ■■■■■
Stanislaus	13	9	9	8	6	-54%	-7 ■■■■■
SYSTEM	421	408	397	348	342	-19%	-79 ■■■■■

**Numbers of Librarians in CSU System:
2007-2011 (May snapshot)**
79 Fewer Librarians Employed - net change



NOTES ABOUT DATA

1. source: CSU PIMS database, May snapshots
2. Data correspond to the numbers of faculty employed at time of snapshot
3. Faculty members who have multiple appointments are counted only once in this analysis.
4. An increase or decrease from year to year does not represent numbers of new hires, layoffs, or retirements; the increase/decrease represents a net change
for instance: systemwide, there were 6 fewer librarian employed in May 2011 compared with May 2010 (= 342-348)
Librarians may be employed in either tenured/tenure-track or temporary appointments